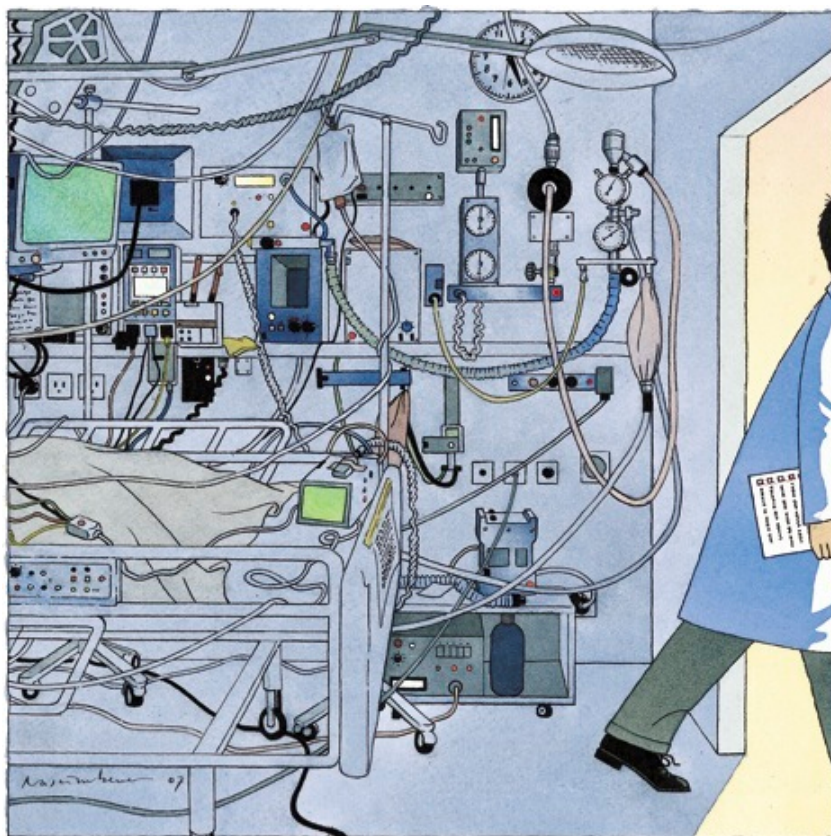




The day after

Maarten Witsenburg

Aftercare starts immediately after the cath



Checklist after leaving the cathlab

Level of care IC, HC, MC?

Sign out patient

Monitoring: BP, rate, rhythm, pulses

Medication: antibiotics, anticoagulants, inotropes, diuretics

Fluid intake, iv or orally? Diagnostic tests: lab, ecg, x-thorax, echo

Inform patient/parents



Access site complications

Always examine your patient yourself

Always examine your patient yourself!





Access site complications

Always examine your patient yourself

Minor bleeding and bruises

No reason for concern

Significant haematomas

Result of poor holding techniques/multiple access attempts

Large haematomas

May compromise leg circulation

May be painful

Access site complications

Major bleeding from puncture site

Apply local pressure and redress

May occur after

Larger access sheaths

Arterial access

Coughing, vomiting

Sandbag
applied to
procedure
site



Major bleeding from other sites (unexplained hemodynamic instability)

Retroperitoneal bleeding

Haemothorax (subcl access)

Subcutaneous bleeding in older children and adults

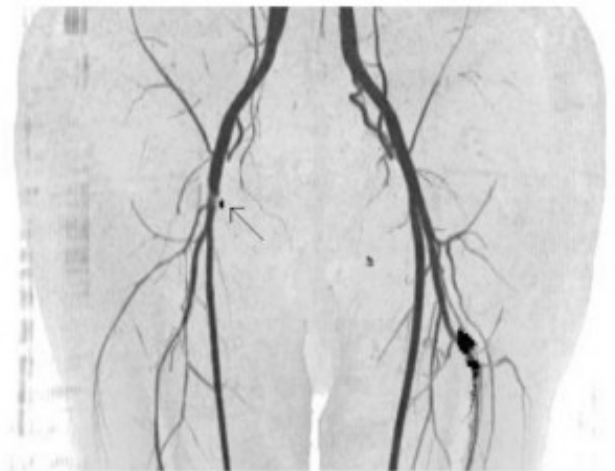
Access site complications

Vascular trauma

- Arterial occlusion
- Venous occlusion

- Vascular tear
- Pseudoaneurysm
- AV-fistulas

- Inappropriate use/result of closure devices



Checklist next day

Going home?

Puncture sites

Diagnostic tests

Lab

Ecg

Echocardiogram (evaluation of result, PE)

Medication continued?

Endocarditis prophylaxis?



Checklist next day

Instructions for patient/parents

Medication

Endocarditis prophylaxis

Physical activities



Follow up appointments

Inform GP and referring specialist